



# EXPLORE THE MUSEUM WITH A PARTNER

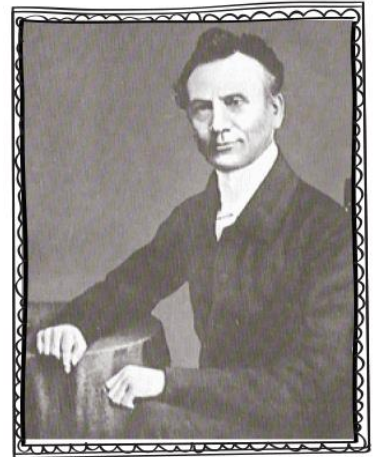
There are spaces for written answers but some questions are for discussion with your partner.

- Look at the timeline 1805-1898. When would you say the difficult times were for George Müller?

.....

.....

.....



- Look around the museum and see how many items you can identify. Talk about them with your partner.
- Look at the embroidery that the girls created.
- Can you see a surprising task that the boys did? .....
- Look at the photographs. What sort of activities can you see the children doing?

.....

.....

.....

- Are there are any photographs that you don't understand? Ask an adult to explain what is happening.



- Write down two facts that you didn't know about George Müller before you visited the museum.

.....

.....

.....

.....

.....



# EXPLORE THE MUSEUM WITH A PARTNER

- Look at George's desk. We are told that he prayed with each orphan when they left the orphanage. Why do you think he did this?

.....

.....

.....



- Do you have any further questions to ask our guide?

.....

- Draw your favourite object and say what it was used for.

.....